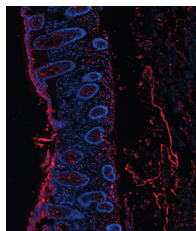


CONTENTS • SEPTEMBER 2017 • VOLUME 24, NO. 9

COVER IMAGE



Cover photograph: Colonic tissue from a severe *Clostridium difficile*-infected patient shows positive staining of exotoxin toxin A (TcdA) on the mucosal surface. The patient's colonic tissue sections were stained with fluorescence (red)-labeled anti-TcdA antibodies, and significant signals were detected on the mucosal surface. Blue shows DAPI (4',6-diamidino-2-phenylindole) staining of nuclei. (Copyright © 2017 American Society for Microbiology. All Rights Reserved.)

SPOTLIGHT

Articles of Significant Interest Selected from This Issue by the Editors e00233-17

MINIREVIEW

The Cross-Species Mycobacterial Growth Inhibition Assay (MGIA) Project, 2010–2014 e00142-17

Michael J. Brennan, Rachel Tanner, Sheldon Morris, Thomas J. Scriba, Jacqueline M. Achkar, Andrea Zelmer, David A. Hokey, Angelo Izzo, Sally Sharpe, Ann Williams, Adam Penn-Nicholson, Mzwandile Erasmus, Elena Stylianou, Daniel F. Hoft, Helen McShane, Helen A. Fletcher

VACCINES

A Cation-Binding Surface Protein as a Vaccine Antigen To Prevent *Moraxella catarrhalis* Otitis Media and Infections in Chronic Obstructive Pulmonary Disease e00130-17
Timothy F. Murphy, Aimee L. Brauer, Antoinette Johnson, Gregory E. Wilding, Mary Koszelak-Rosenblum, Michael G. Malkowski

Dose Selection for an Adjuvanted Respiratory Syncytial Virus F Protein Vaccine for Older Adults Based on Humoral and Cellular Immune Responses e00157-17
Judith Falloon, H. Keipp Talbot, Craig Curtis, John Ervin, Diane Krieger, Filip Dubovsky, Therese Takas, Jing Yu, Li Yu, Stacie L. Lambert, Tonya Villafana, Mark T. Esser

CLINICAL IMMUNOLOGY

Identification of an Atypical Enzootic Bovine Leukosis in Japan by Using a Novel Classification of Bovine Leukemia Based on Immunophenotypic Analysis e00067-17
Asami Nishimori, Satoru Konnai, Tomohiro Okagawa, Naoya Maekawa, Shinya Goto, Ryoyo Ikebuchi, Ayako Nakahara, Yuzumi Chiba, Masaho Ikeda, Shiro Murata, Kazuhiko Ohashi

Assignment of Weight-Based Antibody Units for Four Additional Serotypes to a Human Antipneumococcal Standard Reference Serum, 007sp e00194-17
D. Goldblatt, A. McKeen, P. Burbidge, S. McElhiney, L. McLaughlin, A. Johnson, M. Rauh, P. C. Giardina

DIAGNOSTIC LABORATORY IMMUNOLOGY

Rubella Surveillance and Diagnostic Testing among a Low-Prevalence Population, New York City, 2012–2013 e00102-17
Beth M. Isaac, Jane R. Zucker, Francesca R. Giancotti, Emily Abernathy, Joseph Icenogle, Jennifer L. Rakeman, Jennifer B. Rosen