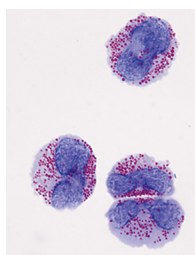




CONTENTS • AUGUST 2017 • VOLUME 24, NO. 8

COVER IMAGE



*Cover photograph:* Functionally competent eosinophils differentiated *ex vivo* from normal mouse bone marrow. Shown are bone marrow-derived eosinophils generated in high purity (>98%) in *ex vivo* culture of unselected mouse bone marrow progenitors. This method utilizes recombinant cytokines, including stem cell factor, FLT3 ligand, and interleukin-5, and has been used widely to generate model eosinophils from both wild-type and gene-deleted mouse strains. Original magnification,  $\times 64$ . (Photo courtesy of Helene F. Rosenberg, Inflammation Immunobiology Section, Laboratory of Allergic Diseases, NIAID, NIH.) (This is a work of the U.S. Government and is not subject to copyright protection in the United States. Foreign copyrights may apply.)

SPOTLIGHT

**Article of Significant Interest Selected from This Issue by the Editors** e00201-17

VACCINES

**Antibody-Based Correlates of Protection against Cholera: Analysis of a Challenge Study of a Cholera-Naive Population** e00098-17

*Douglas J. Haney, Michael D. Lock, Jakub K. Simon, Jason Harris, Marc Gurwith*

**Conjugation of PspA4Pro with Capsular *Streptococcus pneumoniae* Polysaccharide Serotype 14 Does Not Reduce the Induction of Cross-Reactive Antibodies** e00118-17

*Miriam A. da Silva, Thiago R. Converso, Viviane M. Gonçalves, Luciana C. C. Leite, Martha M. Tanizaki, Giovana C. Barazzone*

**Breadth and Duration of Meningococcal Serum Bactericidal Activity in Health Care Workers and Microbiologists Immunized with the MenB-FHbp Vaccine** e00121-17

*Eduardo Lujan, Elizabeth Partridge, Serena Giuntini, Sanjay Ram, Dan M. Granoff*

**Bioactive Immune Components of Anti-Diarrheagenic Enterotoxigenic *Escherichia coli* Hyperimmune Bovine Colostrum Products** e00186-16

*Khandra T. Sears, Sharon M. Tennant, Mardi K. Reymann, Raphael Simon, Nicky Konstantopoulos, William C. Blackwelder, Eileen M. Barry, Marcela F. Pasetti*

CLINICAL IMMUNOLOGY

**Cytokines Are Markers of the *Clostridium difficile*-Induced Inflammatory Response and Predict Disease Severity** e00037-17

*Hua Yu, Kevin Chen, Ying Sun, Mihaela Carter, Kevin W. Garey, Tor C. Savidge, Sridevi Devaraj, Mary Elizabeth Tessier, Erik C. von Rosenvinge, Ciaran P. Kelly, Marcela F. Pasetti, Hanping Feng*

**Maternal Humoral Immune Correlates of Peripartum Transmission of Clade C HIV-1 in the Setting of Peripartum Antiretrovirals** e00062-17

*Charmaine P. Mutucumarana, Joshua Eudailey, Erin P. McGuire, Nathan Vandergrift, Gerald Tegha, Charles Chasela, Sascha Ellington, Charles van der Horst, Athena P. Kourtis, Sallie R. Permar, Genevieve G. Fouda*

**The Pneumococcal Serotype 15C Capsule Is Partially O-Acetylated and Allows for Limited Evasion of 23-Valent Pneumococcal Polysaccharide Vaccine-Elicited Anti-Serotype 15B Antibodies** e00099-17

*Brady L. Spencer, Anukul T. Shenoy, Carlos J. Orihuela, Moon H. Nahm*

**Protein Malnutrition Alters Tryptophan and Angiotensin-Converting Enzyme 2 Homeostasis and Adaptive Immune Responses in Human Rotavirus-Infected Gnotobiotic Pigs with Human Infant Fecal Microbiota Transplant** e00172-17

*David D. Fischer, Sukumar Kandasamy, Francine C. Paim, Stephanie N. Langel, Moyasar A. Alhamo, Lulu Shao, Juliet Chepngeno, Ayako Miyazaki, Huang-Chi Huang, Anand Kumar, Gireesh Rajashekara, Linda J. Saif, Anastasia N. Vlasova*

**DIAGNOSTIC LABORATORY IMMUNOLOGY**

**Longitudinal IP-10 Serum Levels Are Associated with the Course of Disease Activity and Remission in Patients with Rheumatoid Arthritis** e00060-17

*Anouk van Hooij, Debbie M. Boeters, Elisa M. Tjon Kon Fat, Susan J. F. van den Eeden, Paul L. A. M. Corstjens, Annette H. M. van der Helm-van Mil, Annemieke Geluk*

**Chemiluminescence Immunoassay for the Detection of Antibodies against the 2C and 3ABC Nonstructural Proteins Induced by Infecting Pigs with Foot-and-Mouth Disease Virus** e00153-17

*Zezhong Liu, Junjun Shao, Furong Zhao, Guangqing Zhou, Shandian Gao, Wei Liu, Jianliang Lv, Xiumei Li, Yangfan Li, Huiyun Chang, Yongguang Zhang*