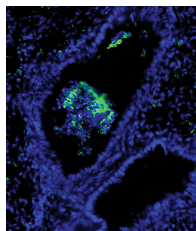




CONTENTS • JUNE 2017 • VOLUME 24, NO. 6

COVER IMAGE



Cover photograph: Immunofluorescence microscopy showing infiltrated neutrophils (green) inside a bronchiole and in the surrounding lung parenchyma during *Serratia marcescens* lung infection. The picture was taken using a Zeiss AxioImager Z1 epifluorescence microscope. Ly6G, green; DNA/nuclei, blue. (Photo courtesy of Norberto Gonzalez-Juarbe and Carlos J. Orihuela, University of Alabama at Birmingham.) (Copyright © 2017 American Society for Microbiology. All Rights Reserved.)

MINIREVIEW

- Pneumococcal Capsular Polysaccharide Immunity in the Elderly** e00004-17
Hugh Adler, Daniela M. Ferreira, Stephen B. Gordon, Jamie Rylance

VACCINES

- An HIV Envelope gp120-Fc Fusion Protein Elicits Effector Antibody Responses in Rhesus Macaques** e00028-17

Zhanna Shubin, Weizhong Li, Bhawna Poonia, Guido Ferrari, Celia LaBranche, David Montefiori, Xiaoping Zhu, C. David Pauza

- Decreased Vector Gene Expression from E2b Gene-Deleted Adenovirus Serotype 5 Vaccines Intensifies Proinflammatory Immune Responses** e00061-17

Dionisia Quiroga, Yasser A. Aldhamen, Sarah Godbehere, Laura Harding, Andrea Amalfitano

- Transcutaneous Immunization with a Band-Aid Prevents Experimental Otitis Media in a Polymicrobial Model** e00563-16

Laura A. Novotny, John D. Clements, Steven D. Goodman, Lauren O. Bakaletz

CLINICAL IMMUNOLOGY

- Cytomegalovirus Virions Shed in Urine Have a Reversible Block to Epithelial Cell Entry and Are Highly Resistant to Antibody Neutralization** e00024-17

Xiaohong Cui, Stuart P. Adler, Mark R. Schleiss, Ravit Arav-Boger, Gail J. Demmler Harrison, Michael A. McVoy

- Parasitic Infections in Pregnancy Decrease Placental Transfer of Antipneumococcus Antibodies** e00039-17

Noah D. McKittrick, David M. Vu, Indu Malhotra, Charles H. King, Francis Mutuku, A. Desiree LaBeaud

- Long-Term Persistence of Cell-Mediated and Humoral Responses to A(H1N1)pdm09 Influenza Virus Vaccines and the Role of the AS03 Adjuvant System in Adults during Two Randomized Controlled Trials** e00553-16

Robbert G. van der Most, Frédéric Clément, Julie Willekens, Walthère Dewé, Karl Walravens, David W. Vaughn, Geert Leroux-Roels

DIAGNOSTIC LABORATORY IMMUNOLOGY

Early Detection of Circulating Antigen and IgM-Associated Immune Complexes during Experimental *Mycobacterium bovis* Infection in Cattle e00069-17

Konstantin P. Lyashchenko, Rena Greenwald, Alina Sikar-Gang, Archana A. Sridhara, Ashley Johnathan, Paul Lambotte, Javan Esfandiari, Mayara F. Maggioli, Tyler C. Thacker, Mitchell V. Palmer, W. Ray Waters