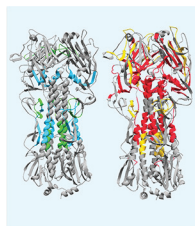




CONTENTS • MARCH 2017 • VOLUME 24, NO. 3

COVER IMAGE



Cover photograph: Human CD4 T cell epitope locations within the influenza A virus hemagglutinin (HA) protein from seasonal and avian viral isolates that are presented by the human HLA-DR1 molecule. Peptide sequences encoding HLA-DR1-restricted CD4 T cell epitopes within the viral HA trimer are separately labeled for each subtype by color (green, pH1; blue, H3; gold, H5; red, H7) and superimposed on the full-length HA structure from A/California/04/09 (H1N1, seasonal HA [PDB 3LZG]) and A/Shanghai/02/13 (H7N9, avian HA [PDB 4LN6]), highlighting the finding that poor immunogenicity of avian HA proteins in humans is not due to a paucity of CD4 epitopes. (See related article at e00548-16.) (Copyright © 2017 American Society for Microbiology. All Rights Reserved.)

VACCINES

Preexisting Immunity, Not Frailty Phenotype, Predicts Influenza Postvaccination Titers among Older Veterans e00498-16

Puja Van Epps, Terrence Tumpey, Melissa B. Pearce, Hana Golding, Patricia Higgins, Thomas Hornick, Christopher Burant, Brigid M. Wilson, Richard Banks, Stefan Gravenstein, David H. Canaday

Using Data from Macaques To Predict Gamma Interferon Responses after *Mycobacterium bovis* BCG Vaccination in Humans: a Proof-of-Concept Study of Immunostimulation/Immunodynamic Modeling Methods e00525-16

Sophie J. Rhodes, Charlotte Sarfas, Gwenan M. Knight, Andrew White, Ansar A. Pathan, Helen McShane, Thomas G. Evans, Helen Fletcher, Sally Sharpe, Richard G. White

Avian and Human Seasonal Influenza Hemagglutinin Proteins Elicit CD4 T Cell Responses That Are Comparable in Epitope Abundance and Diversity e00548-16

Anthony DiPiazza, Katherine Richards, Nicholas Poulton, Andrea J. Sant

Monophosphoryl Lipid A Enhances Efficacy of a *Francisella tularensis* LVS-Catanionic Nanoparticle Subunit Vaccine against *F. tularensis* Schu S4 Challenge by Augmenting both Humoral and Cellular Immunity e00574-16

Katharina Richard, Barbara J. Mann, Aiping Qin, Eileen M. Barry, Robert K. Ernst, Stefanie N. Vogel

CLINICAL IMMUNOLOGY

Otitis-Prone Children Produce Functional Antibodies to Pneumolysin and Pneumococcal Polysaccharides e00497-16

Lea-Ann S. Kirkham, Selma P. Wiertsema, Karli J. Corscadden, Tulia Mateus, Gemma L. Mullaney, Guicheng Zhang, Peter C. Richmond, Ruth B. Thornton