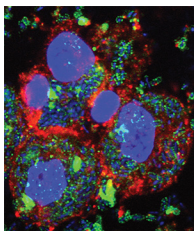


CONTENTS • FEBRUARY 2017 • VOLUME 24, NO. 2

COVER IMAGE



Cover photograph: Confocal immunofluorescent microscopy of human monocyte-derived macrophages exposed overnight to enterotoxigenic *Escherichia coli* (ETEC). ETEC organisms were phagocytosed by macrophages. DNA/nuclei, blue; ETEC, green; CD14, red. Z-section images were obtained using a Zeiss 510 META confocal microscope. (Copyright © 2017 American Society for Microbiology. All Rights Reserved.)

SPOTLIGHT

Articles of Significant Interest Selected from This Issue by the Editors e00573-16

VACCINES

Kinetics of Meningococcal Serogroup C-Specific Functional Antibody Levels Up to 15 Years after a Single Immunization with a Meningococcal Serogroup C Conjugate Vaccine during Adolescence e00429-16

Susanne P. Stoof, Mariëtte B. van Ravenhorst, Debbie M. van Rooijen, Richarda M. de Voer, Fiona R. M. van der Klis, Greet J. Boland, Elisabeth A. M. Sanders, Guy A. M. Berbers, Peter F. Teunis

Safety and Immunogenicity of the Recombinant *Mycobacterium bovis* BCG Vaccine VPM1002 in HIV-Unexposed Newborn Infants in South Africa e00439-16

André G. Loxton, Julia K. Knaul, Leander Grode, Andrea Gutschmidt, Christiane Meller, Bernd Eisele, Hilary Johnstone, Gian van der Spuy, Jeroen Maertzdorf, Stefan H. E. Kaufmann, Anneke C. Hesselting, Gerhard Walzl, Mark F. Cotton, the VPM Study Group

CLINICAL IMMUNOLOGY

Functional and Antigen-Specific Serum Antibody Levels as Correlates of Protection against Shigellosis in a Controlled Human Challenge Study e00412-16

Avital A. Shimanovich, Amanda D. Buskirk, Shannon J. Heine, William C. Blackwelder, Rezwanul Wahid, Karen L. Kotloff, Marcela F. Pasetti

An Opsonic Phagocytosis Assay for *Plasmodium falciparum* Sporozoites e00445-16

Ryan W. J. Steel, Brandon K. Sack, Moriya Tsuji, Mary Jane L. Navarro, Will Betz, Matt E. Fishbaugher, Erika L. Flannery, Stefan H. I. Kappe

Assignment of Opsonic Values to Pneumococcal Reference Serum 007sp for Use in Opsonophagocytic Assays for 13 Serotypes e00457-16

R. L. Burton, J. Antonello, D. Cooper, D. Goldblatt, K. H. Kim, B. D. Plikaytis, L. Roalfe, D. Wauters, F. Williams, G. L. Xie, M. H. Nahm, M. Akkoyunlu

DIAGNOSTIC LABORATORY IMMUNOLOGY

Serological Analysis of Tuberculosis in Goats by Use of the Enferplex Caprine TB Multiplex Test e00518-16

Amanda O'Brien, Clare Whelan, John B. Clarke, Alastair Hayton, Neil J. Watt, Gordon D. Harkiss

Challenges in Interpretation of Diagnostic Test Results in a Mumps Outbreak in a Highly Vaccinated Population e00542-16

L. A. Trotz-Williams, N. J. Mercer, K. Paphitis, J. M. Walters, D. Wallace, E. Kristjanson, J. Gubbay, T. Mazzulli